



**LANDWEST**  
Planning Consultants

Our Ref: 24210

06 May 2025

Chief Executive Officer  
Shire of Irwin  
PO Box 21  
DONGARA WA 6525

Dear Sir

**DEVELOPMENT APPLICATION AND EXTRACTIVE INDUSTRY LICENCE:  
LOT 14 O DEPOSITED PLAN 46523 (NO 185) ELLERY ROAD, YARDARINO  
REGISTERED PROPRIETOR: DONGARA LIME AND GRAVEL PTY LTD  
OPERATOR: DONGARA LIME AND GRAVEL PTY LTD**

## **1.0 INTRODUCTION**

On behalf of the registered proprietors, an application is made for Development Approval and renewal of Extractive Industry Licence.

Please find enclosed:

1. Endorsed application form.
2. Site Plan 24210 Figure 1, dated 28/03/2025
3. Extraction Plan 24210 Figure 2, dated 28/03/2025
4. Cross-sections AA\_BB, CC\_DD and EE\_FF dated March 2025.
5. Adjoining landowner consent for access across portion Lot 10.
6. Table 3 Compliance Report to the previous planning approval P863
7. Clearing Permit CPS 7803/1

## **2.0 PREVIOUS APPROVALS**

Development Approval (DA) was issued on 11 January 2019, and the current Extractive Industry Licence (EIL) expired 30 June 2024.



**LANDWEST**  
Planning Consultants

#### 4.0 PROPOSED EXTRACTION

Dongara Lime & Gravel Pty Ltd is the owner/operator of the property extraction industry. They will continue with the extraction program on Lot 14 over the forward five (5) year period.

The area of the application is demonstrated in plan 24210-01. The extent of future extraction in the next five (5) year period is indicated in Landwest Plan 24210-02.

Cross-sections included with this application provide detailed data on existing and proposed extraction profiles.

It is proposed that the existing quarry face will continue to be developed in a general southerly direction, parallel to the eastern boundary of Lot 14. The proposed areas will be contained within the area approved for clearing by the Department of Water and Environmental Regulation.

Lime sands: **Approximately 100,000t per year** are proposed to be extracted. This estimate is based on the average extraction in the previous 5-year period.

However, the final volume will vary and is dependent on weather factors, farming practices, and market conditions.

#### 5.0 EXTRACTION OPERATIONS

##### 5.1 Site Operations

- Approval is sought seven (7) days per week operations.
- Operation hours between sunrise and sunset (as defined by the Australian Government Bureau of Meteorology).
- Estimated truck movements:

Generally, 50t – 57t combination capacity trucks. Estimated truck movements are based on the historical extraction tonnage extraction volume for past twelve (12) months.

However, the extraction volume, truck combination and practices at the farming destination may vary the actual movement numbers.

Table 2 Traffic Movements	
	Truck Movements/Day
January	20-21
February	32-33
March	19-20
April	5-6
May	Negligible
June	Negligible
July	Negligible
August	6-7
September	10-11
October	6-7
November	Based on demand
December	Based on demand



**LANDWEST**  
Planning Consultants

## 5.2 *Site Access, Signage and Traffic Management:*

Lot 14 is accessed via Ellery Road and over portion of adjoining Lot 10. The adjoining landowner has provided their consent (see attached).

The local authority will have responsibility for the upgrading and maintenance of Ellery Road including the Brand Highway/Ellery Road intersection. A contribution by the proponent to the local authority for this purpose is expected and to be determined in consultation with the local government.

Directional and OHS signage (including but may not be limited to vehicle speed, appropriate activity warnings, site information, evacuation areas, emergency response procedures and contact numbers etc) are employed across site as required. In addition, signage is in place to preclude indiscriminate access when the site is not operational, together with locked access gates.

Traffic management on site includes but may not be limited to directional signage, radio channel notification, parking overflow areas, defined tarp up areas, defined parking areas.

## 5.3 *Active Mining Area Access and Induction Requirements:*

- All operators of plant and equipment on site are fully inducted by the operator on site.
- All truck drivers are required to be inducted prior to entry to the site. This includes advising the rules of the site and the rules of the road for entering and exiting the pit, speed limits and safety matters.
- Drivers communicate when on approach to the step up on Ellery Road, when travelling either direction, on entry to, or exit from Lot 14, entry to pit area. All drivers and operators operate on universal UHF channels with staff and other trucks.

## 5.4 *Extraction Process:*

The methodology for mining lime sand at this location is as follows:

- Overburden 500mm to 1000mm deep is removed and stockpiled near excavation area, to be used for future rehabilitation. Undertaken by D7 dozers. Stockpile area for overburden and topsoil identified.
- Sand is extracted from the primary dune face using dozers and front-end loaders. Benches/berms are created progressively to prevent collapse and to ensure a safe work area.
- Where the sand is clean it is loaded directly into waiting road trains or stockpiled (See Figure 2 for stockpile location).
- Where sand contains plant debris or similar or hard sand clumps, it is passed through a screening plant prior to stockpiling or loading.
- Loaders used to load the screen with sand to be cleaned.
- Loader removes clean sand from the screening plant for either stockpiling or loading.
- Where sand is further from the loading areas, a bulldozer will push the sand if needed closer to the screen or the ramps for loading.
- A bulldozer is also utilised to manage the slope faces as required to prevent engulfment.
- Trucks are loaded from two ramps.
- When the trucks come into the pit they call up on UHF radio to confirm it is safe to enter the active mining area.
- The truck drivers will un-tarp while waiting to be called to the loading area.
- Overflow truck parking areas indicated on Figure 2.
- Once in the loading area, truck drivers do not exit vehicles.



**LANDWEST**  
Planning Consultants

- Trucks move away from loading ramp to exit truck, tarp up, and sign for weight docket.
- The driver calls up on UHF when leaving the active mining area, exiting site and also on approach to step up on Ellery Road.
- Site signage must be obeyed at all times.



*Various Directional and OHS Signage on Site (not an exhaustive signage suite).*





**LANDWEST**  
Planning Consultants

### 5.5 *Other*

The land is generally free draining and there are no drainage issues.

Internal site roads are constructed with marl base and overlaid with compacted gravel. Watering trucks are used in summer months when prevailing winds are strong, to minimise dust generation on internal and external roads. Water trucks source water in Geraldton and at Shire of Irwin Dongara standpipe facility.

No explosives or explosive devices are used on site for blasting or extraction activities.

No changes to previous clearing permit CPS 7803/1 (appended to application).

### 5.6 *Safety Reporting and Investigation:*

Any breach of site safety rules will be investigated and actioned accordingly.

There have been no recordable incidents in the approximate twenty (20) years of operations on Lot 14.

The onsite operator has a range of business management systems to assist with management of its operations. These may include (but not limited to) OHS, emergency response procedures, fitness for work, and code of conduct.



**LANDWEST**  
Planning Consultants

## **6.0 MANAGEMENT PLAN**

### **6.1 Weed Management:**

A search of both the Department of Primary Industries and Regional Development's *Western Australian Organism List (WAOL)* data base and *declared plant control Table* indicates no known or declared pests on Lot 14.

#### **(a) Weed Identification & Location**

*Verbesina encelioides* (Crown beard) has been identified on properties in the Midwest previously. WAOL defines *Verbesina encelioides* as being "permitted" and it has not been allocated a management category in any local authority (see attached).

There is no significant presence of *Verbesina encelioides* on Lot 14.

Physical description: erect, clumped annual, to 1 m high. Flowers (yellow) October to February. Found in sandy soils, on alluvial flats & roadsides. Characteristics that make it an environmental weed include its ability to invade native vegetation flora, high seed production, seed dormancy, and the ability to tolerate dry conditions. It is toxic to stock. Disturbed sandy soils are more likely to be more vulnerable to infestation.

#### **(b) Potential for Weed Spread**

Weeds often become apparent after soil disturbance after lying dormant and being exposed to light through ground disturbance.

All weeds (seed and stem fragments) have the potential to be spread by the following means:

- Machinery and equipment
- Vehicles
- Shoes/clothing
- Wind
- Water
- Animals

#### **(c) Treatment and Management**

##### Individual Plants:

- Hand remove including roots before seed set (after flowering)
- Dispose thoroughly to ensure stems cannot re-root.
- Apply herbicide according to location in either degraded area or vegetated area.

##### When undertaking any clearing or other activity in association with extraction activities (to minimise the risk of the introduction and spread of weeds):

- Monitor areas for clearing and subsequent extraction activities to identify plants.
- Identification and treatment as above for individual plants. Treatment with herbicide may be constrained to avoid contamination of soil. It is imperative that the operator ensure weeds are not transported with lime sands to agricultural areas.
- clean earth-moving machinery of soil and vegetation prior to entering and leaving the area to be cleared.



**LANDWEST**  
Planning Consultants

- ensure that no weed-affected soil, mulch, fill or other material is brought into the area to be cleared.
- restrict the movement of machines and other vehicles to the limits of the areas to be cleared.

## **6.2 Dust Management:**

Dust may be generated by the following activities associated with extraction –

- Clearing of vegetation
- Removal of topsoil
- Excavation and stockpiling
- Loading of material/s
- Dust lift off from internal roads
- Dust lift off from excavation and/or open areas
- Re-contouring and rehabilitation works.

Dust generation from onsite activities may impact on the following –

- Dwellings and inhabitants on site and adjoining properties
  - Adjoining rural properties
  - Ellery Road users
  - Native Vegetation
- (c) Individually, elements present a low risk from activities, but even cumulatively, the site is considered to have a low/negligible risk from impacts of dust from activities due to the following:
- Low nuisance level from disturbed soil
  - Topography of site and remnant vegetation assist with a screening function
  - The area of works in relation to the whole landholding area.
  - Distance to other sensitive land uses or user groups
  - Prevailing winds
- (d) The minimisation of dust on health, safety and environmental values to be achieved as follows:
- Ensure all employees of owner/operator identify source of dust nuisance and monitor and report to site manager accordingly
  - Enforcement of speed limits on site
  - Ensure vehicles only use dedicated and marked access roads
  - Operator to ensure dust minimization at time of loading by minimizing drop height
  - Undertake soil stabilization to minimize exposed areas subject to wind erosion as soon as practical at completion of extraction activity (including temporary stabilization between seasons)
  - Maintain vegetation buffers at boundary of extraction areas to contain dust lift off from vehicle movements in open areas.
  - Operate water truck to apply water to unsealed operational areas during dry and windy conditions as required, and/or at times of high volume of vehicle movements during peak cartage times.
  - Operator contracts water purchase local operators (Geraldton and Dongara stand pipe facilities).



**LANDWEST**  
Planning Consultants

### **6.3 Noise Management:**

- (a) Closest dwelling: Approx 600m from face of current extraction area.
- (b) Operation hours between sunrise and sunset (as defined by the Australian Government Bureau of Meteorology).
- (c) All machinery monitored to ensure exhaust system and breaking systems are functioning correctly and not producing excessive noise.
- (d) Screening of excavation areas achieved by topography and geographical features, ridgelines etc.
- (e) No blasting occurs, all excavation with machinery only, dozer, loader, trucks and other light vehicles as required.



## 7.0 REHABILITATION & DECOMMISSIONING PLAN

The interim active rehabilitation area is demonstrated on Figure 2. Hay/oats have been hand sown to achieve immediate cover of exposed areas and support regrowth of native species (various *Acacia* species).

A decommissioning plan has the following components for the site at the time of full closure of all operations:

1. Very high or unstable excavation faces will be battered and flattened off, to reduce potential collapse. It should be noted that dune contouring occurs naturally due to wind forces over time. Manual shaping is restricted to basin or spoon contouring to create more stable ground form and to assist with revegetation. Consistency with contours for surrounding areas of unclear land is to be achieved.
2. Ripping of pit floor, all ex-active areas and access roads.
3. Previously removed overburden material and suitable screened material which contains plant material and which has been stockpiled, is distributed across ripped areas and used for mulch and to reduce water evaporation.
4. Direct seeding of native vegetation similar to pre-extraction vegetation types. Particular emphasis on top of pit walls and surrounding lips to progressively screen exposed sections of wall. This is intended to reduce visual impacts and aid slope stabilisation.
5. All facilities and equipment will be removed from site at the end of the work. This includes all earthmoving equipment, screening machinery, ramps and equipment storage areas.
6. Screened debris not suitable for revegetation purposes will be removed from the site and disposed of at suitable land fill site.
7. Where required, safety fencing will be installed and maintained to prevent indiscriminate access and make areas safe. Monitor condition/suitability of fencing to ensure unauthorised public access continues to be precluded. This will ensure the long-term safety of the site.
8. Monitor revegetation programs and modify/implement additional as required. This will ensure the long-term success of the rehabilitation of the site.
9. Consider plan for possible future uses within the context of the zoning of the landholding and future development potential: in conjunction with local authority and other relevant agencies.



**LANDWEST**  
Planning Consultants

## **8.0 COMPLIANCE REPORT**

Table 3 addresses compliance with conditions on both the Development Approval and EIL.



**LANDWEST**  
Planning Consultants

**Table 3 Compliance with Development Approval and Extractive Industry Licence  
Lot 14 Ellery Road, Yardarino  
At March 2025**

Condition	Reference	Further Information	Further Action
1	Development application report and approved plans (as amended) form part of approval.		Nil
2	Development Approval valid 5 years.	EIL granted; site operational. LG confirmation operations can continue in interim.	Nil
3	Extraction pit suitably drained with no discharge to water course/s.	Site is operating in compliance with the approved plans	None
4	Dust, Noise and Weed Management Plans to be implemented at all times	De-watering is undertaken as required. Monitoring for weeds occurs during grow season and removed as necessary.	Ongoing monitoring by operator.
5	Annual contribution/s for maintenance/renewal of Ellery Road cash or in-kind as agreed.	Contribution made in some years.	None
6	Annual contribution/s for future upgrading of Ellery Road/Brand Highway Intersection Ellery/Brand intersection upgrade.	Contribution made in some years.	None
7	Dust suppression required to ensure no impact on Brand Highway/Ellery Road intersection or the function of Brand Highway in that location.	De-watering of intersection as required by appointed contractor.	Ongoing monitoring by operator.



**LANDWEST**  
Planning Consultants

Condition	Reference	Further Information	Further Action
8	Cease operations in the event of unsuitable or high-wind conditions where measure in DMP are not suitable to suppress dust, to ensure no impact from dust lift.	Watering as required to minimise dust lift from the operating area as required. Owner sows' oats to assist with dust suppression as required.	Ongoing monitoring by operator.
9	EIL to be issued which includes: PL Insurance certificate of currency.	Site operating generally in compliance with EIL. Current application to ensure all local government approvals are in place.	This application for renewal with varied operational matters.
10	Hours of operations ( <u>as amended</u> ) Mon – Sat, 7am – 6pm	Currently operating seven days per week. Current applications seeks approval to modify to between sunrise and sunset, 7 days per week.	Ongoing monitoring by operator.
11	No blasting	Extraction lime sands only.	
12	Responsibility for damage to Ellery Road	No known defects or outstanding works requirements.	Nil
13	Progressive rehabilitation as per endorsed rehabilitation and Decommissioning Report	Site active but some rehabilitation in progress as detailed in report. Site visit/operator confirmation	
14	Use of Ellery Road only for access in association with operations	All movements via Ellery Road direct to Brand Highway	Nil
15	Depth of extraction to groundwater table level, no less than 2 metres at all times.	Survey AHD levels of extraction are indicated on Landwest Plan 2410-02. Active area approximately 40mAHD. Groundwater depth in extraction area between 10m and 30m depth. NA	Nil
16	Above-ground storage of toxic materials and/or no refueling		





**LANDWEST**  
Planning Consultants

Condition	Reference	Further Information	Further Action
	<b>Extractive Industries Licence 01/19:</b>		
1	Compliance with the approved development approval P863	Site visit & owner and operator records.	Nil
2	Installation warning signage along boundaries of site: No more than 200 apart minimum 1.8h x 1m	The site is generally operating in compliance with the approved plans for the excavation area and the management of operations.	Nil
3	Maintain PI Insurance no less than \$10,000,000.	Certificate of Currency available on request. Value \$20million.	Nil
4	Cessation of operations for period greater than 12 months or permanently implementation of previously approved Rehabilitation and Decommissioning Plan.	NA	



**LANDWEST**  
Planning Consultants

## 9.0 CONCLUSION

The application and compliance report demonstrates that the current operations are generally compliant with current local government approvals, albeit they have now expired. Where the individual elements of the operations are not compliant, this application seeks to rectify this and for approval to be contemplated by the local government.

Approval for a five (5) to 10 (ten) year period is requested.

Please do not hesitate to contact our office with any further queries.

Yours faithfully

Gail Bermingham

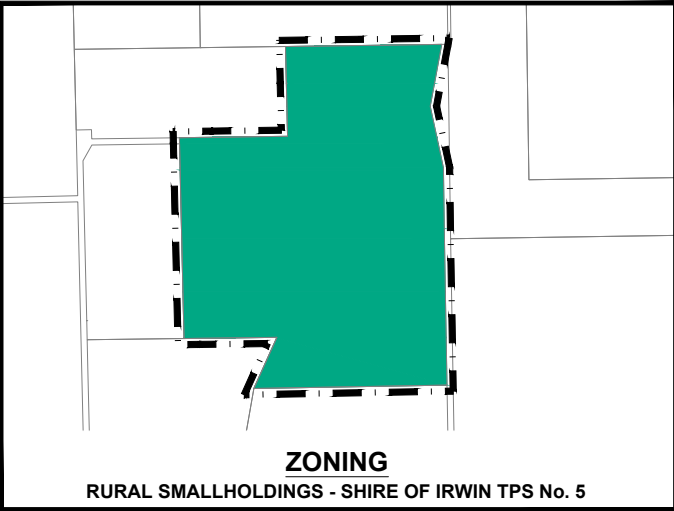
enc

CALCULATIONS	
TOTAL AREA LOT 14	79.953 ha
AREA SUBJECT TO APPLICATION	40.913 ha
SHIRE OF IRWIN TOWN PLANNING SCHEME No 5 ZONING	RURAL SMALLHOLDINGS
USE CLASSES - INDUSTRY EXTRACTIVE	A - Advertising
4.3.2 extract: 'A' - means that the use is not permitted unless the Local Government has exercised its discretion by granting Planning Approval after giving special notice in accordance with clause 9.4	

SUBJECT LAND

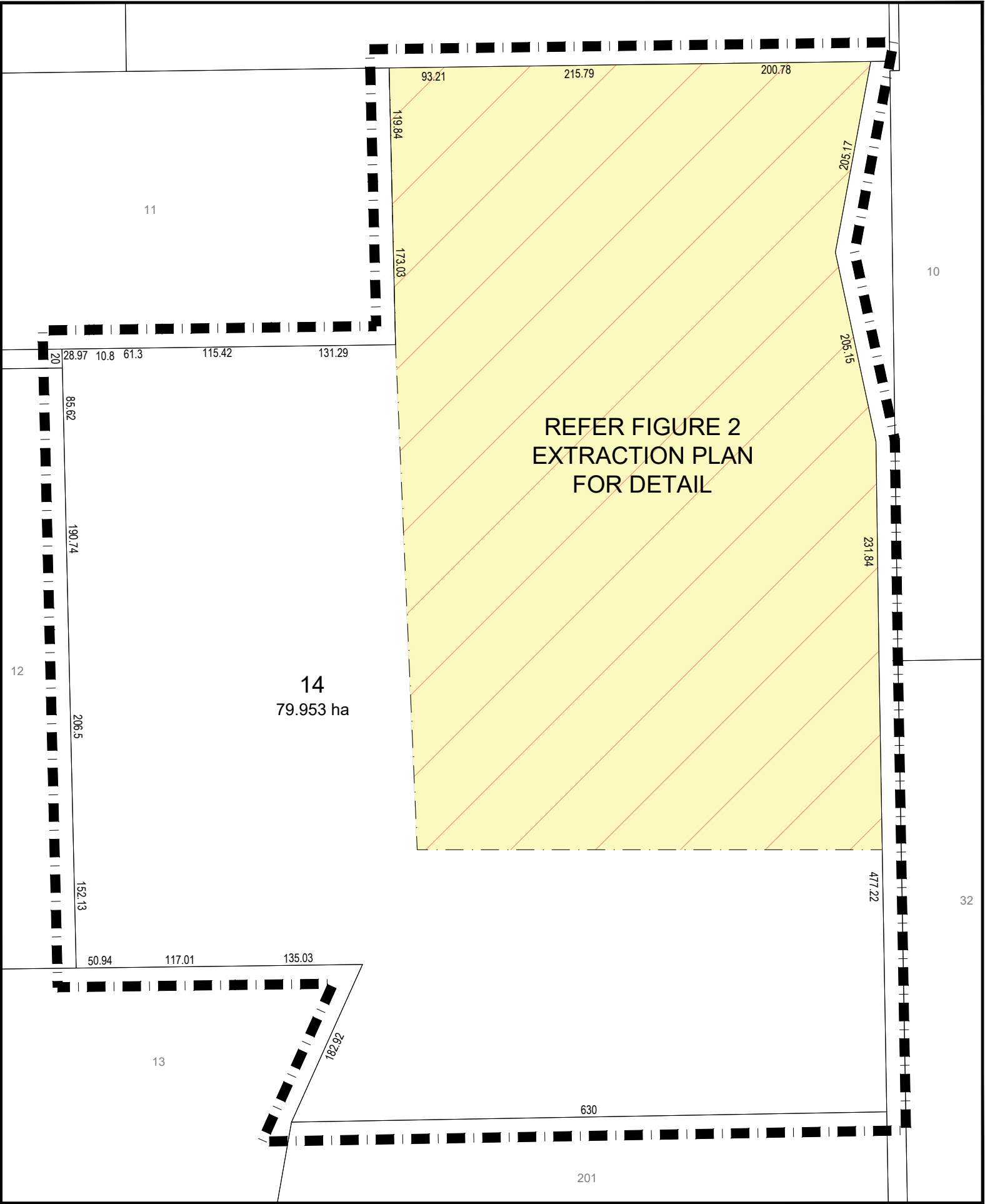
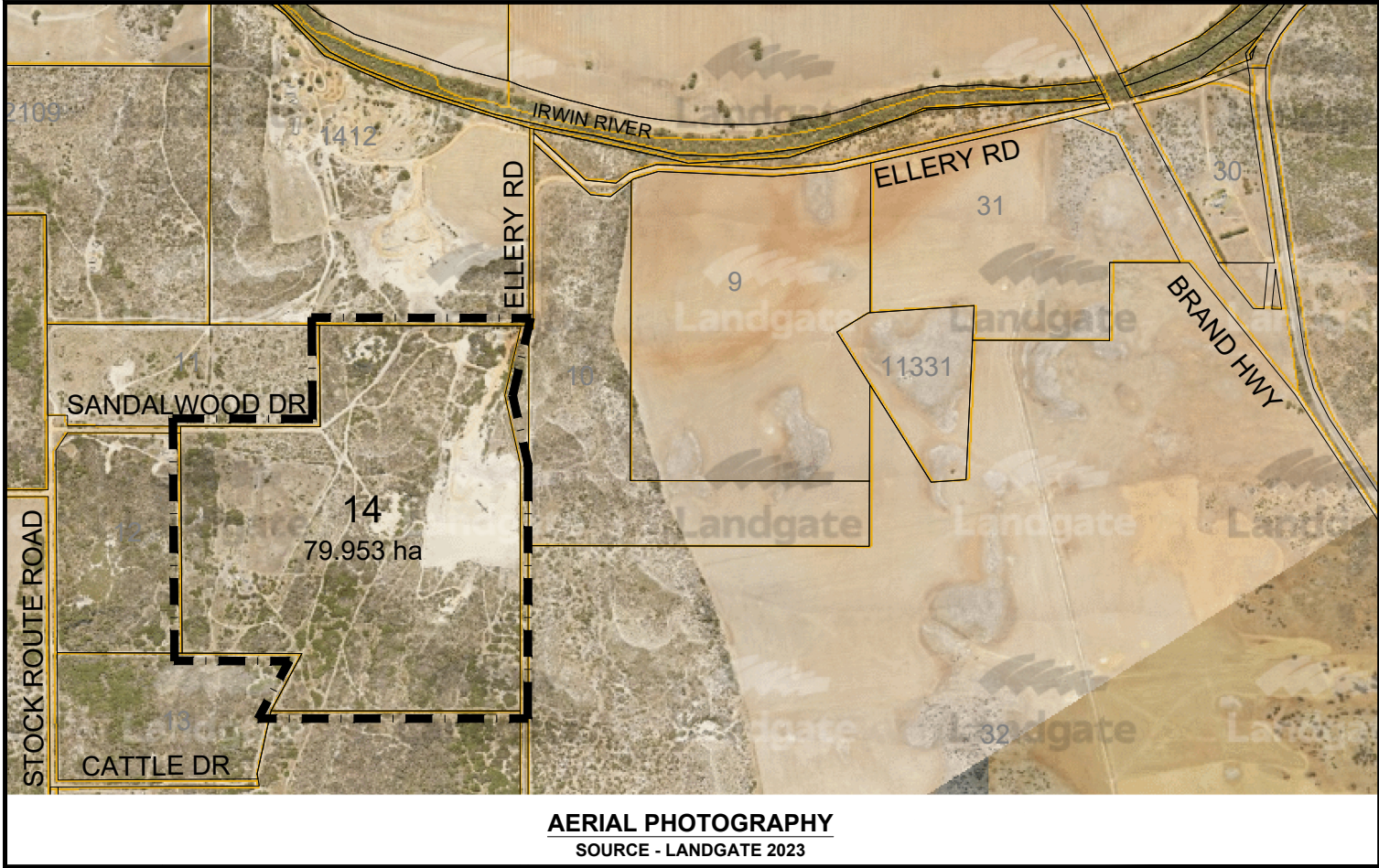
APPLICATION AREA

- NOTES:
1. Dimensions and areas are subject to lot pre-calculation and survey.
  2. The plan is prepared for the purposes of obtaining an Extractive Industry Licence with the Shire of Irwin and should not be used for any other purpose. No liability will be accepted where the plan is used for purposes other than that indicated.
  3. This plan is prepared using information provided by Landgate. The data extracted from Geospatial Databases is intended for informational purposes only.



ZONING

RURAL SMALLHOLDINGS - SHIRE OF IRWIN TPS No. 5





- Notes :
- 1. Survey Information and aerial photography : Quantum Surveys Ref : 24402.
  - 2. Plan to be read in conjunction with Management Plan appended to Application.
  - 3. Plan to be read in conjunction with Cross-Sections \_\_\_\_\_.



	MUSTER POINT & STAFF CARPARK		PROPOSED EXCAVATION AREA		SCREENING PLANT		PROPOSED CLEARING AREA
	MACHINERY / EQUIPMENT STORAGE AREA		ACTIVE REHABILITATION AREA		LOADING RAMP		STOCKPILE AREA For Overburden and top soil (not excavation)
	DIRECTION OF TRUCK MOVEMENTS		STOCKPILE AREA		LOADING AREA	PROPOSED EXTRACTION AREA 1.7166 ha	
	EXISTING EXCAVATION AREA				GATE	PROPOSED CLEARING AREA 2.2026 ha	



**LANDWEST**  
URBAN AND RURAL PLANNING CONSULTANTS

8 Anzac Terrace Geraldton WA 6530  
PO BOX 1597 Geraldton WA 6531  
Email : [info@landwest.net.au](mailto:info@landwest.net.au)  
Phone : (08) 9965 0550


CLIENT:	DONGARA LIME & GRAVEL PTY LTD
TITLE:	EXTRACTION PLAN LOT 14 ON PLAN 46523 ELLERY ROAD YARDARINO
CERTIFICATE OF TITLE:	2606 / 624
DATE LAST MODIFIED:	28/03/2025

REV:    DATE:    DETAILS:

APPROVED:    BY:    APPROVED:

DESIGNED: GMB    DRAWN: DW

PLAN: **FIGURE 2**



N

\* This plan remains the property of Landwest and must not be used for any purpose other than which it was prepared for, in relation to the land duly described, Landwest accepts no responsibility for any losses or damages caused to any person/s who may use the information for a purpose for which it was not intended.

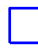

SCALE: 1 : 2500 @A3

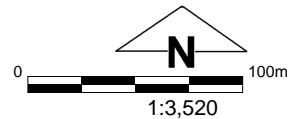


# CPS 7803/1 - Map



## Legend

-  Clearing Instruments Proposals
-  Roads
-  Imagery
-  Local Government Authority
-  Cadastre



(Approximate when reproduced at A4)

GDA 94 (Lat/Long)

Geocentric Datum of Australia 1994

..... Date .....



GOVERNMENT OF  
WESTERN AUSTRALIA  
WA Crown Copyright 2017